



# C2C-Congress Venlo



Kees Verweel

Chair C2C Bouwgroep  
General manager sales DEVENTER Profielen

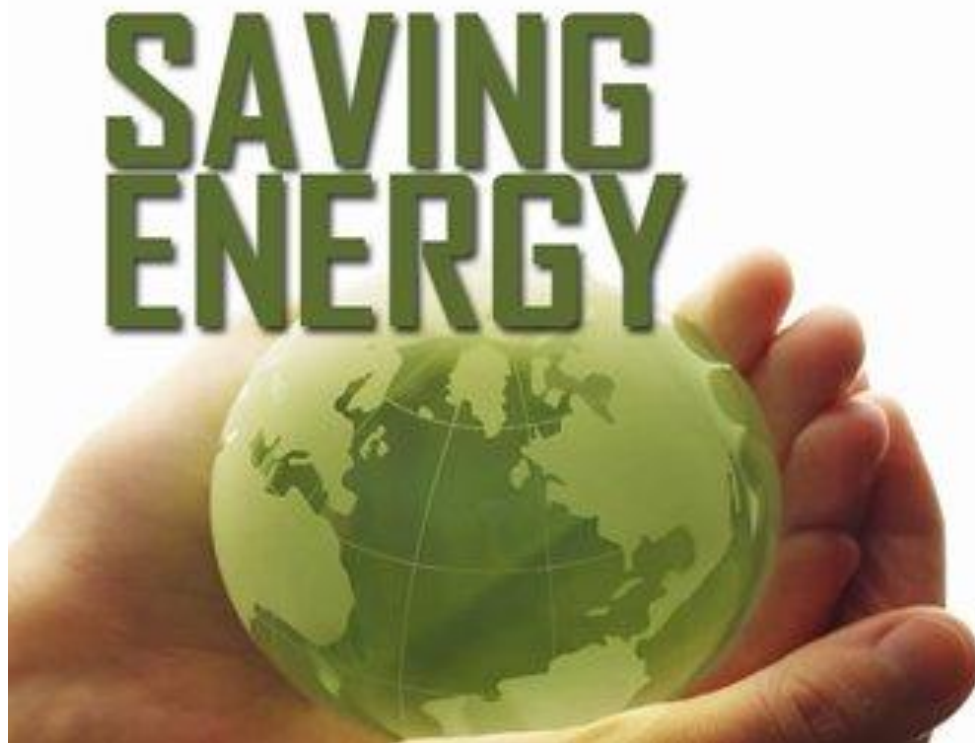
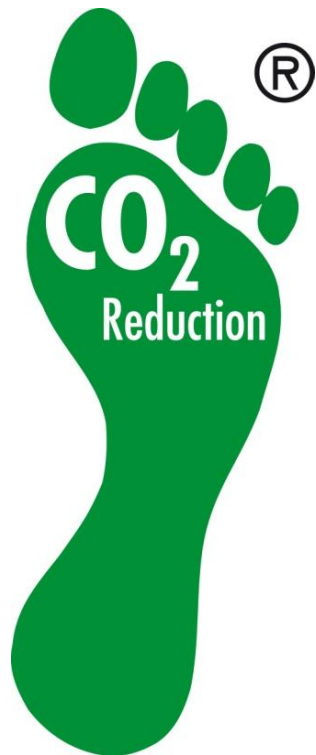


Martijn Weening

Consultant SGS Search

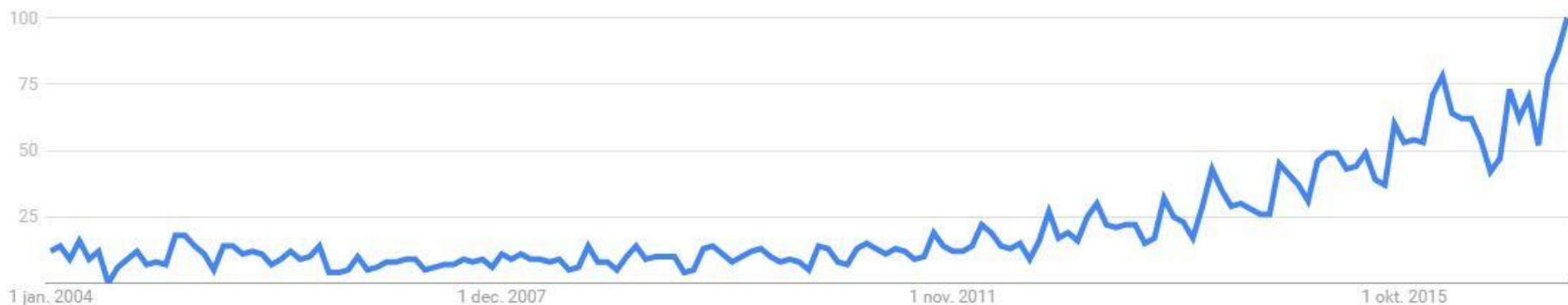


# Global sustainability trends

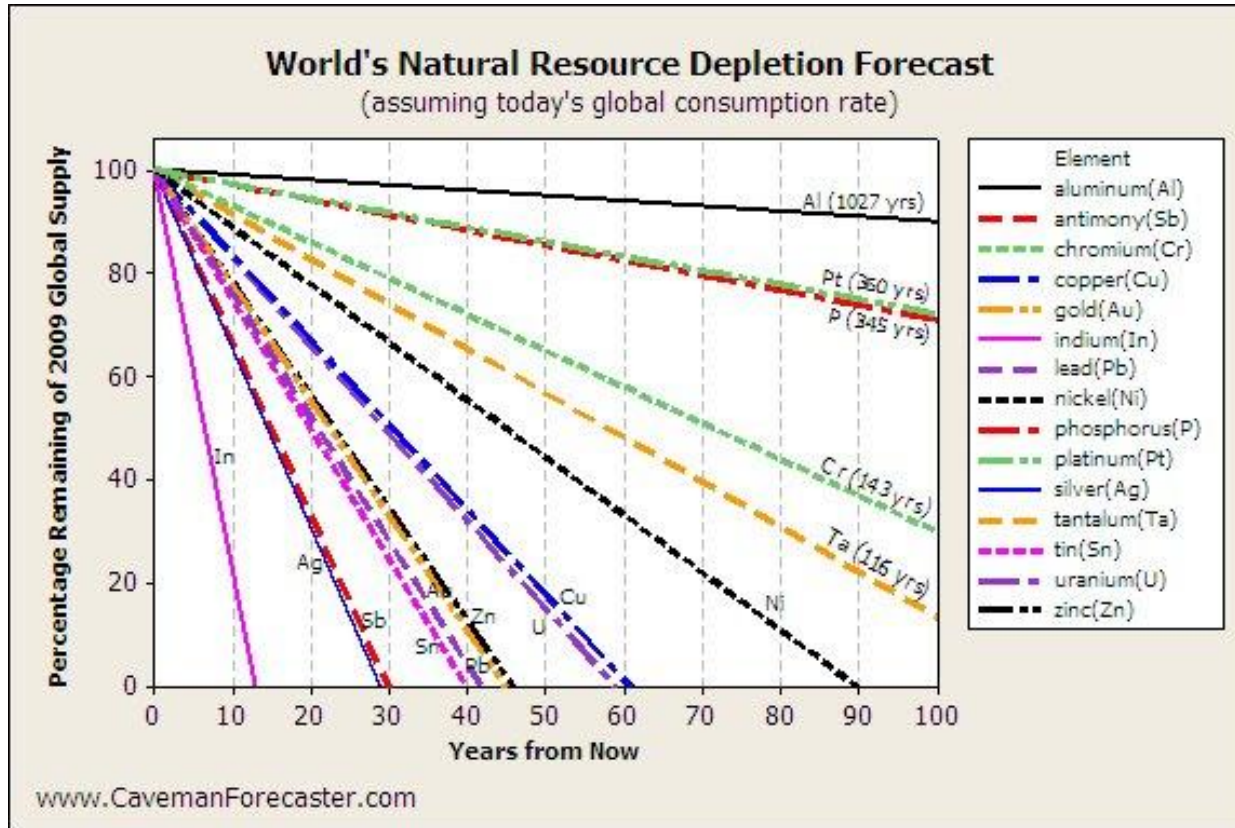


# Global sustainability trends

- Circular economie searches in Google



# Global sustainability trends



# Global sustainability trends

*de Volkskrant*

## Al het afval moet in 2050 worden hergebruikt

Kabinet schetst route naar een 'circulaire economie'

Het kabinet wil dat Nederland in 2050 'circulair' is. Dan moet de economie volledig draaien op hergebruikte grondstoffen en moet al het afval worden verwerkt tot bruikbare materialen. Zo moeten het gebruik van grondstoffen en de uitstoot van CO<sub>2</sub> worden verminderd.



# Thesis statement

**Reusing / recycling of  
materials is a must!**



# Rubber grains



# PET & Fleece





# Carpet tiles

DESSO



# Thesis statement



**We know what's in our  
materials!**



# We (could) know what we eat



per 30g cereal:



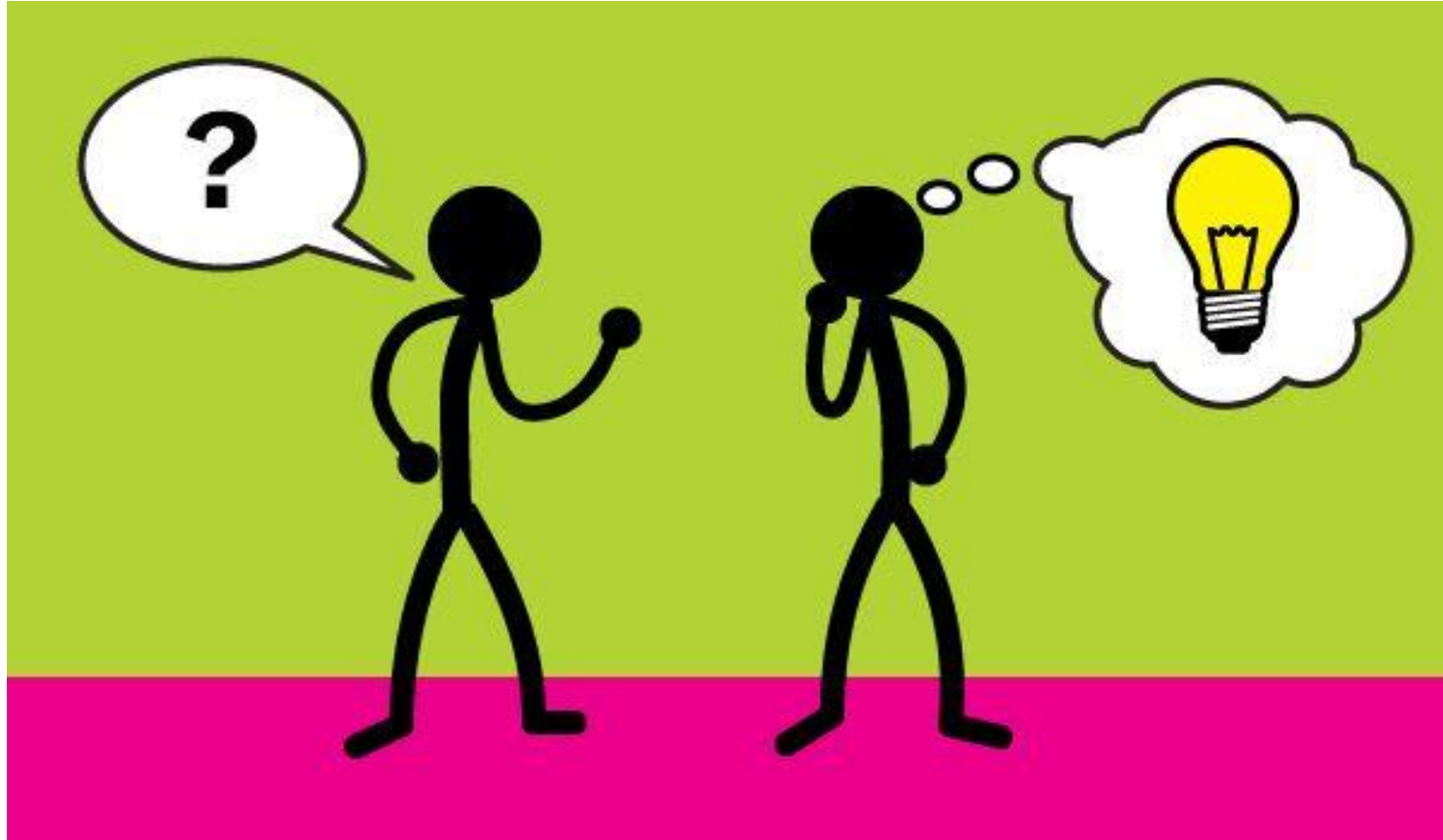
% of an adult's reference intake.  
Typical values per 100g: Energy 1530kJ/360kcal



# What about our products?



# How to find out?



# Supply chain - Venlo



# Snowball effect



# Snowball effect

# PLANEFFECT SYSTEMWANDEN



## Partitions



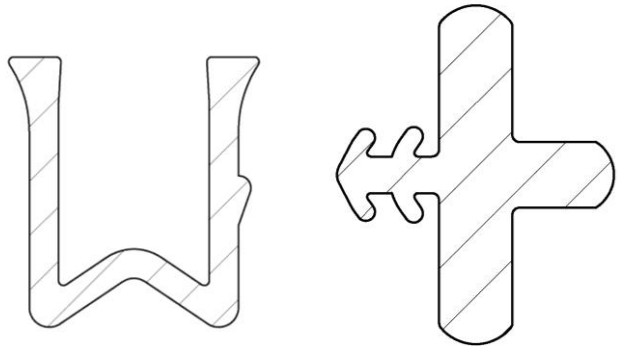


# Snowball effect

## PVC

## DEVENTER

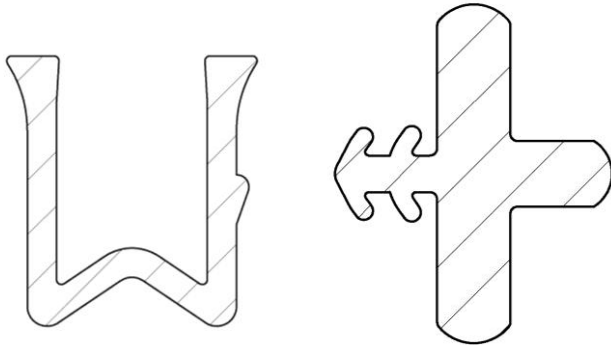
DICHTINGSprofielen



# Snowball effect

~~PXC~~

TPE



# Change

- Grains now made from TPE



# Positive effect

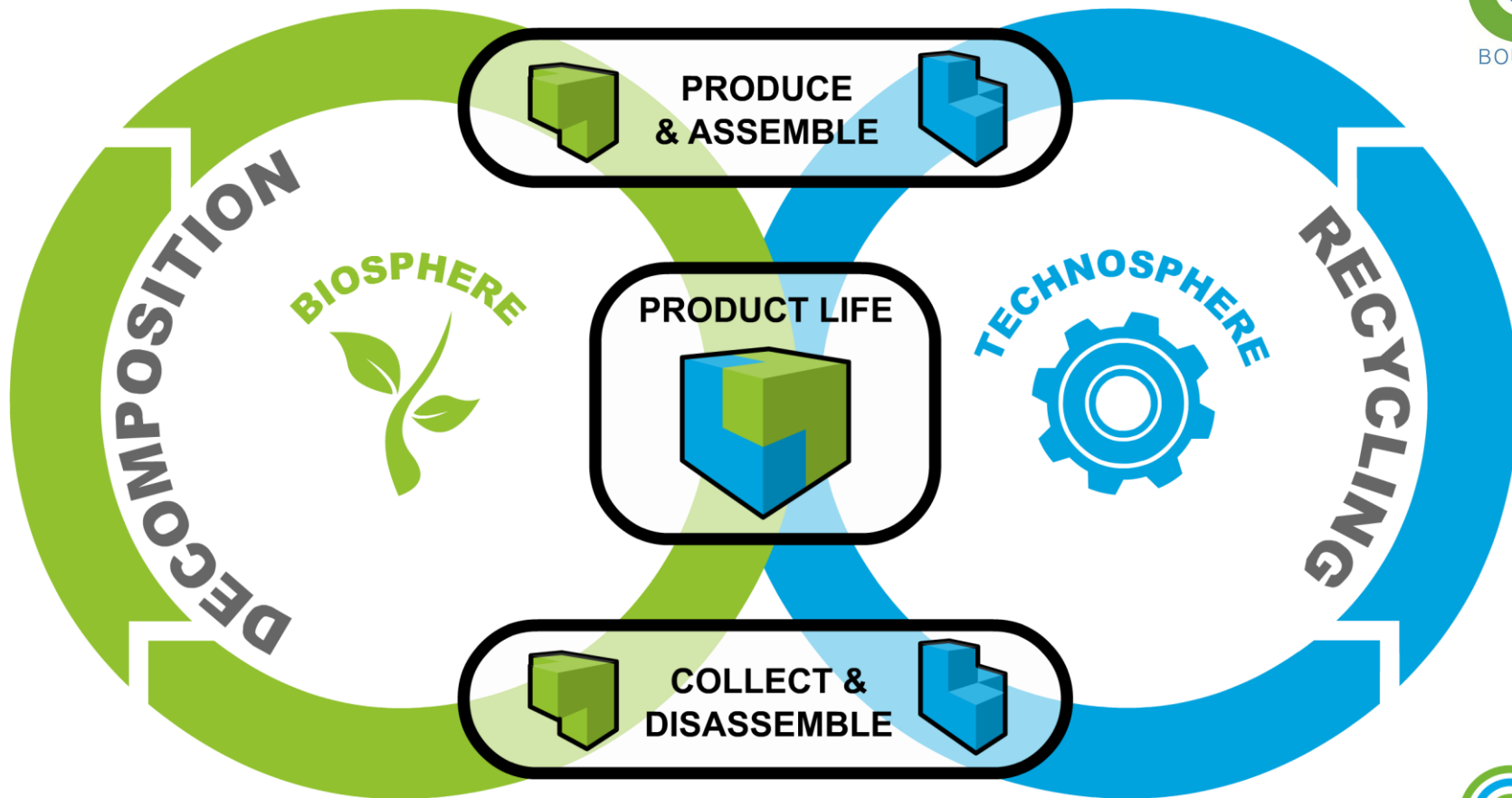
- Both at the top and bottom

# Our tool



PRODUCTS PROGRAM





# Essential: material health!



No chemicals with negative impact  
Reusable / recyclable without risks  
Good for human health & environment  
**Essential in circular designs!**





# CIRCULAR PRODUCTS? C2C Bouwgroep!

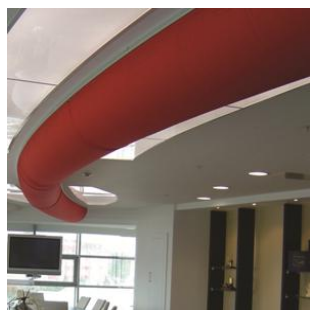




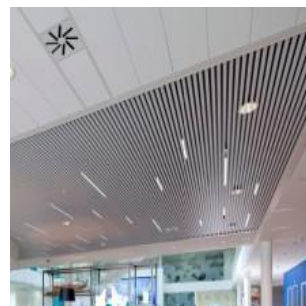
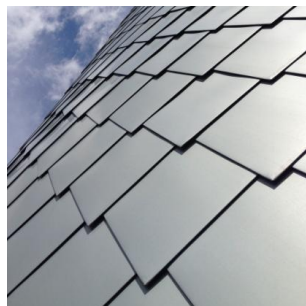
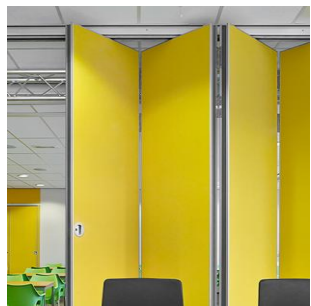
# Way to influence supply chain

- Founded March 2015
- 8 C2C certified manufacturers & C2CPII
- Launched at 'Build to Bloom' June 2015





## 2017: 15 manufacturers & 4 knowledge partners



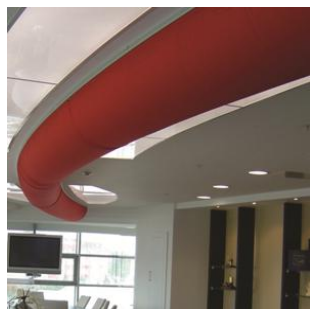
# C2C Bouwgroep



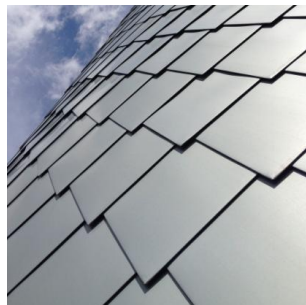
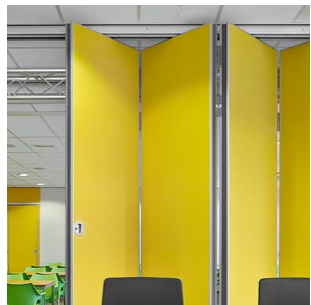
*Promote C2C / material health within the  
Dutch building construction market by  
collaboration*

[www.c2cbouwgroep.nl](http://www.c2cbouwgroep.nl)





Visit our showroom.....



# Tony Chocolonely

**TONY'S CHOCOLONELY.**  
op weg naar 100% slaafvrije chocolade



*Planet Earth doesn't need people....  
People need Planet Earth!*



**Thank you for your attention**

[c2cbouwgroep.nl](http://c2cbouwgroep.nl) | [info@c2cbouwgroep.nl](mailto:info@c2cbouwgroep.nl) | +31 (0)6 129 556 83

